

## Assembly overview - drive shafts (with constant velocity joint) for vehicles with 6-speed manual gearbox and four-wheel drive

Vehicles with 5-cylinder engine only



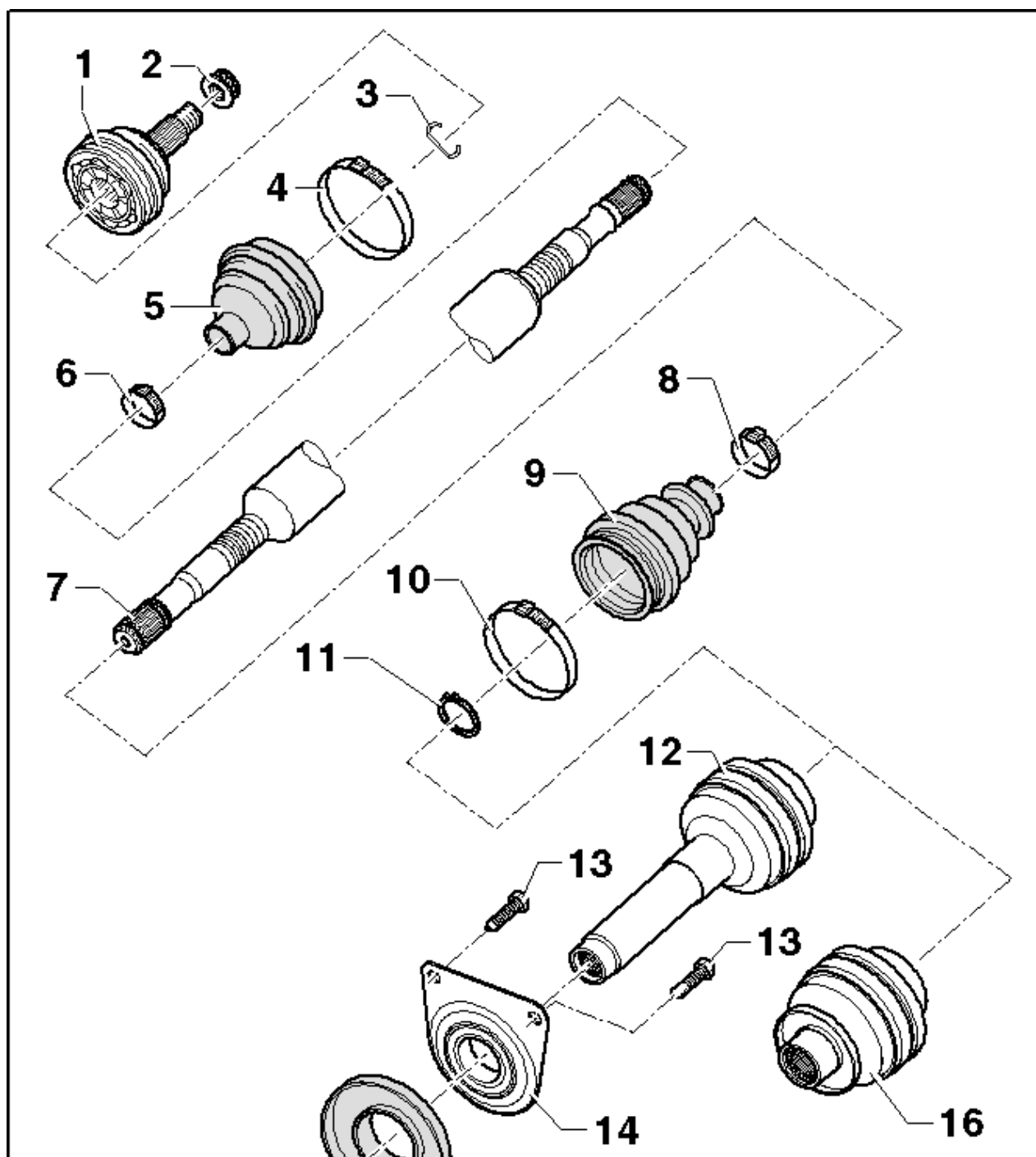
### Note

During start of production, construction was changed from »bonded« drive shafts (outer joint inserted in wheel hub with locking fluid) to »unbonded« drive shafts (outer joint pressed onto wheel hub). Procedures for repair work and what must be observed are described in this chapter.



### Caution

When removing and installing drive shafts, do not allow them to hang free and stop against joints due to over bending.



### 1 - Outer constant velocity joint

- ❑ Renew only as complete unit
- ❑ Removing and installing → Chapter.
- ❑ Procedure for vehicles with bonded drive shafts: clean and degrease splines and apply locking fluid -D 154 000 A1-.

### 2 - 12-point nut

- ❑ Always renew after removing.
- ❑ Initially tighten to 200 Nm and then slacken off 180°
- ❑ Final torque setting: 200 Nm

### 3 - Retaining ring

- ❑ Always renew after removing.
- ❑ Insert in groove in shaft

### 4 - Clamp

- ❑ Always renew after removing.

### 5 - Boot

- ❑ For outer constant velocity joint.
- ❑ Check for splits and chafing
- ❑ Removing and installing → Chapter.

### 6 - Clamp

- ❑ Always renew after removing.

### 7 - Drive shafts

- ❑ Removing drive shafts → Chapter
- ❑ Installing drive shafts → Chapter
- ❑ Allocation → Electronic parts catalogue „ETKA“

### 8 - Clamp

- ❑ Always renew after removing.

### 9 - Boot

- ❑ Check for splits and chafing

### 10 - Clamp

- ❑ Always renew after removing.

### 11 - Retaining ring

- ❑ Always renew after removing.
- ❑ Remove and install using circlip pliers -VW 161 A-.

### 12 - Inner constant velocity joint

- ❑ For right drive shaft.
- ❑ Renew only as complete unit

### 13 - Bolt

- ❑ Specified torque: 20 Nm and turn 90° further
- ❑ For right drive shaft.

### 14 - Mounting

- ❑ For right drive shaft.

### 15 - Protective cap

- ❑ For right drive shaft.

### 16 - Inner constant velocity joint

- ❑ For left drive shaft.
- ❑ Renew only as complete unit
- ❑ Also for right drive shaft on vehicles with four-wheel drive